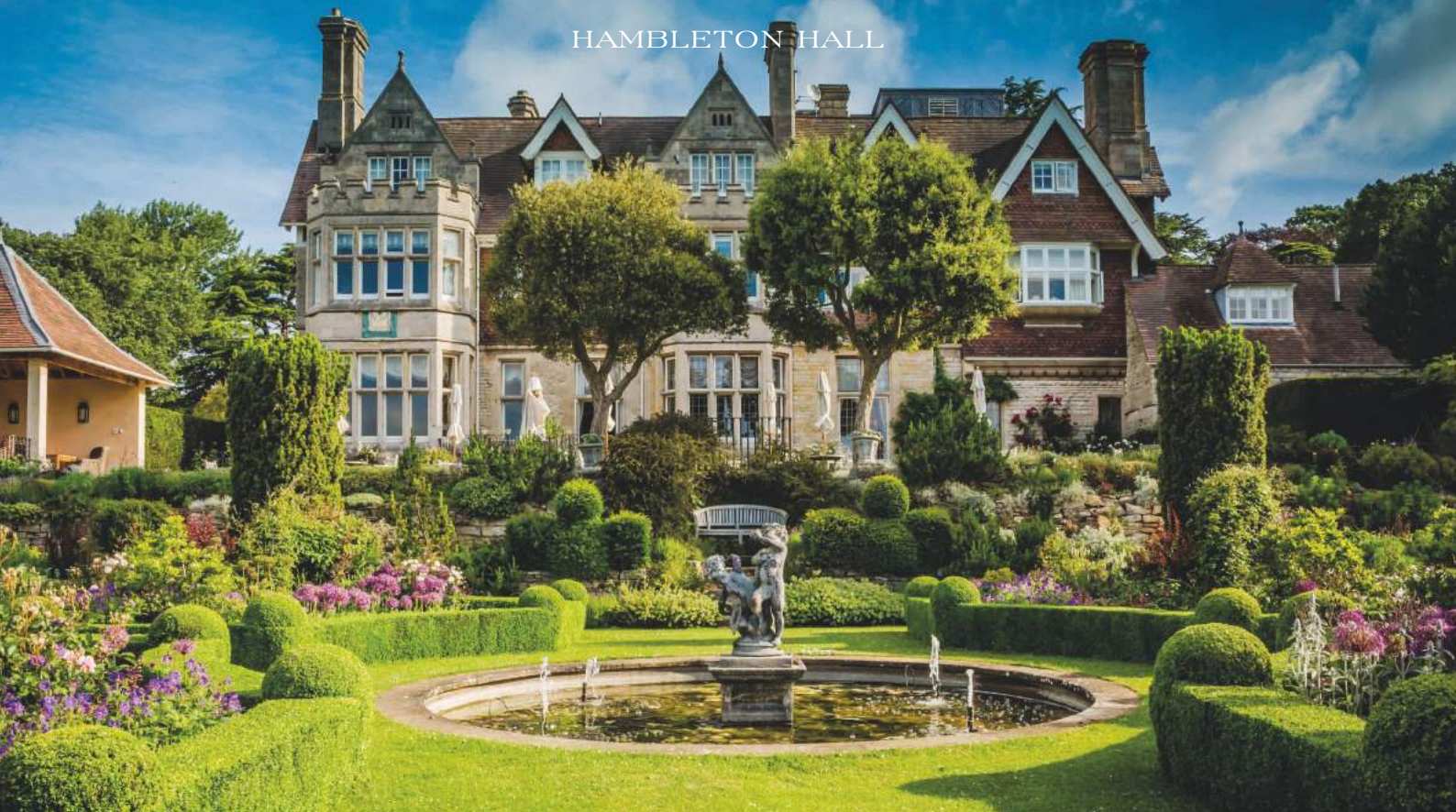




HAMBLETON HALL





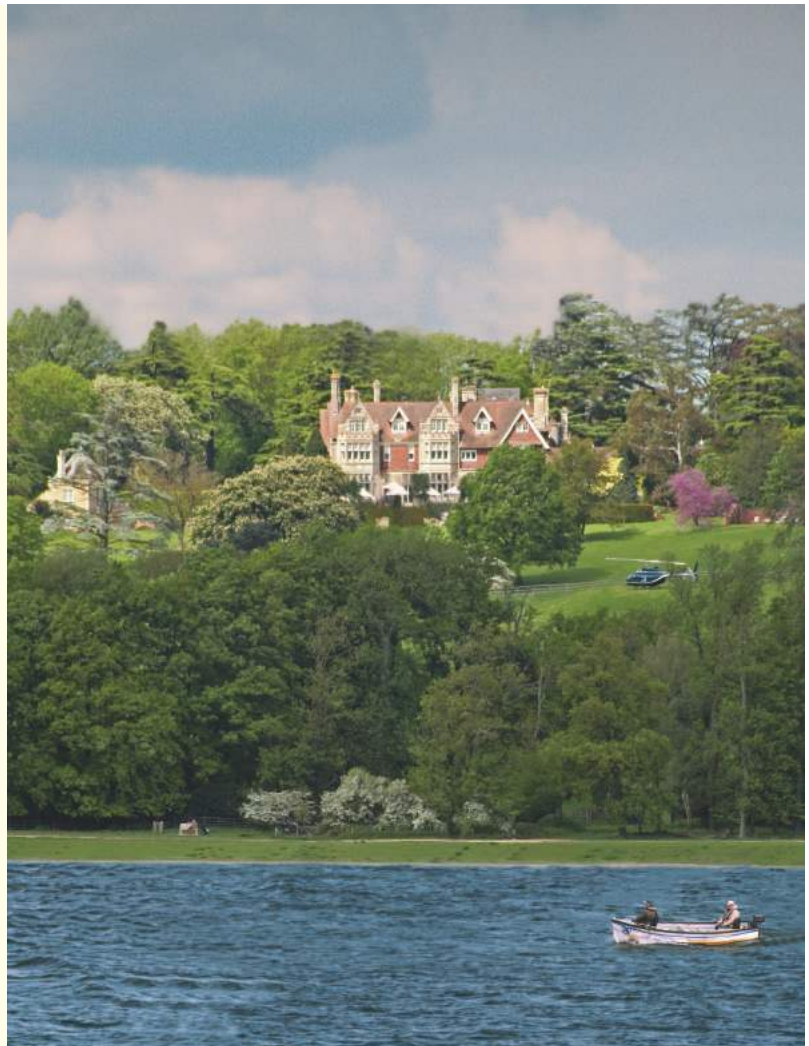


In 1980 Tim and Stefa Hart  
established Hambleton Hall in the  
charming county of Rutland.

Michelin, The Good Food Guide, The AA,  
The Good Hotel Guide, Andrew Harper  
and others have consistently rated both hotel  
and restaurant as amongst the Nation's very best.

The Hotel remains small (17 rooms)  
and under the same ownership and direction.

The setting overlooking  
Rutland Water is spectacular:









Our 17 rooms differ in size, outlook and decoration, but all benefit from the same comfort and attention to detail. For images of all bedrooms visit our website [www.hambletonhall.com](http://www.hambletonhall.com).







Interiors designed by Stefa Hart  
are stylish and supremely comfortable.





Three private dining rooms set the scene for the perfect party.





Head Chef and Director, Aaron Patterson, has headed the kitchen team since 1992. His food is seasonal, often local, always delicious. Nineteen years of praise from all of the independent guides has never distracted him from the need to recreate the magic each day.

The award winning wine list reflects the knowledge and enthusiasm of Tim Hart and Dominique Baduel (Sommelier).

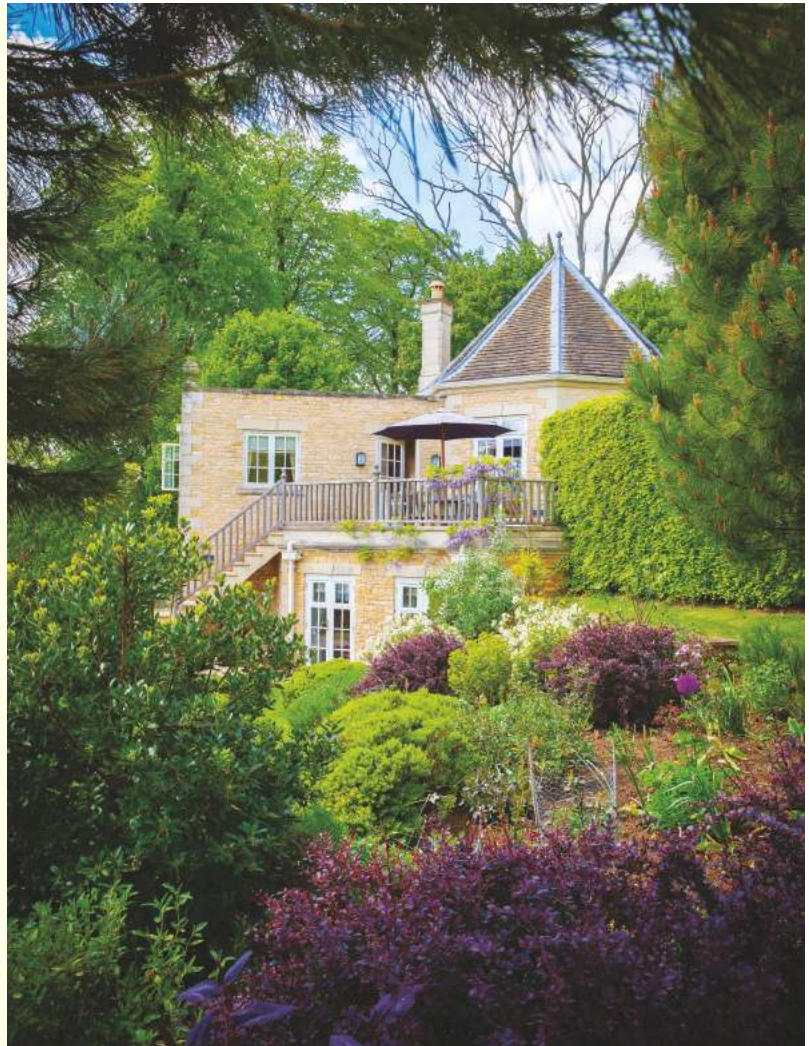






Our most luxurious accommodation is to be found in the Croquet Pavilion, a two bedroomed “folly”, fifty metres from the main house, with its own sitting room and breakfast room.

Like the main house the Pavilion opens on to our glorious gardens.





Tim Hart, Proprietor



Dominique Baduel, Sommelier



Chris Hurst, General Manager

In Hotels and Restaurants people are even more important than premises.





Graeme Matheson, Restaurant Director



Aaron Patterson, Director & Head Chef

The team of around 55 staff aspire to deliver daily the warmest welcome and unobtrusive, professional service in all departments.

Ospreys at Rutland Water



Sailing on Rutland Water



Barnsdale Garden



Burghley House



Hambleton Hall swimming pool



Cycling around Rutland



Hambleton Bakery



## Energetic?

Enjoy swimming, tennis, cycling and croquet on site; golf, sailing, fox-hunting, fishing, wind surfing and game shooting nearby.

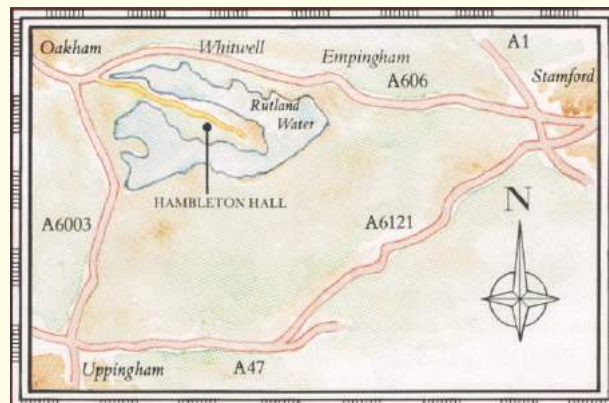
## Curious?

Antique shops and art galleries, Oakham and Stamford, half-a-dozen great houses and their collections, and gardens, will keep you amused.

The Rutland Water Nature Reserve (Ramsar & SSSI) is on our doorstep.

Tim Hart's booklet "Things to do around Hambleton Hall" gives full details of local sporting, cultural and shopping possibilities.

Visit Hambleton Bakery at Exton, see the bakers in action and taste the traditional breads & cakes.



## BY CAR

### From London (2-3 hours)

Swiss Cottage and Finchley Road lead you to the A1 northbound. Stick to the A1 until you see the exit "A606 Oakham" which is approximately 90 miles north of central London. Follow the Oakham road through the villages of Empingham and Whitwell. 8.4 miles after leaving the A1, turn left, signposted "Hambleton Hall".

Continue straight on into the village of Hambleton. The Hotel sign is on your right.

### From Heathrow

Use M4, M25 and A1 or use M4, M25, M1, A421 and A1.

### From Oakham

Follow signs "Stamford A606" approximately half a mile from Oakham you will see a right turn signposted "Hambleton Hall".

### From Scotland and the North west

M6 to exit 40 then A66 to Scotch Corner and A1 south.

### From Bath area

Use the Fosseway via Stow on the Wold to Lutterworth then Market Harborough, Rockingham, Uppingham, Oakham.

## BY RAIL

Fast services to Peterborough and Kettering from London, Kings Cross and St. Pancras (50 minutes approx.), 30 minutes by taxi from station to hotel or branch line from Peterborough to Oakham about 2 trains per hour.

## BY AIR

East Midlands Airport (1 hour by car) serves many British and European Airports. Stansted and Luton can also be convenient (1.5 hours by car).



HAMBLETON HALL • HAMBLETON • OAKHAM • RUTLAND • LE15 8TH • TELEPHONE (01572) 756991 • FAX (01572) 724721

Website: [www.hambletonhall.com](http://www.hambletonhall.com) • Email: [hotel@hambletonhall.com](mailto:hotel@hambletonhall.com)



The Mark of Quality